

Congratulations on choosing OneClamp

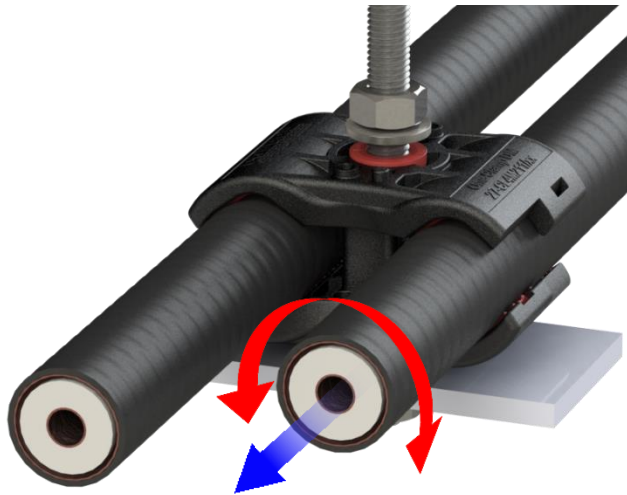
Designed by professionals for professionals

OneClamp is designed to provide optimum bracing for your cables and protect signal integrity. Used correctly OneClamp will provide optimum grip without harming cable geometry or distorting signals. One clamp will isolate your signals from structural shock, tremor and microphonics.



INSTRUCTIONS FOR USE

Adjusting cable

To adjust cable position in the clamp loosen the nut by min of 6 rotations (or min of 6mm) and pull or push whilst rotating cable 10 deg clockwise and 10 deg counter clockwise.






Adjusting clamp size

For use on all manufacturers* 1/2 inch feeder, super flex and cable diameters of 13-16mm choose the closed jaw position	
For use on all manufacturers* 7/8 inch and all cable diameters of 27-29mm choose the open jaw position.	

*Cable sizes vary from manufacturer to manufacturer

To change from closed to open jaw positions:

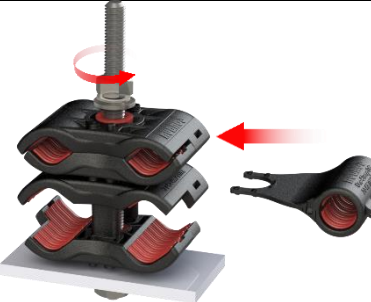
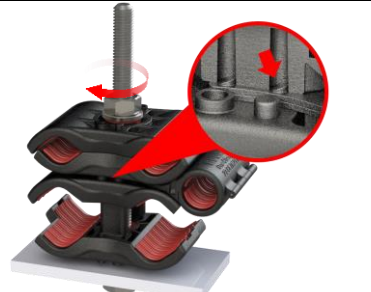
Loosen the nut by min of 16 rotations (or 24mm)	
Lift upper jaw from lower jaw and rotate through 180 deg	
Lower upper jaw ensuring bracing leg pips are dovetailed.	

Note:

The preset positions are designed to preserve cable geometry and are recommended for RF cables. All cables up to 29mm can be clamped if no geometry preservation is required e.g. power cable.

Deploying Daughter Clamp

To deploy daughter clamp:

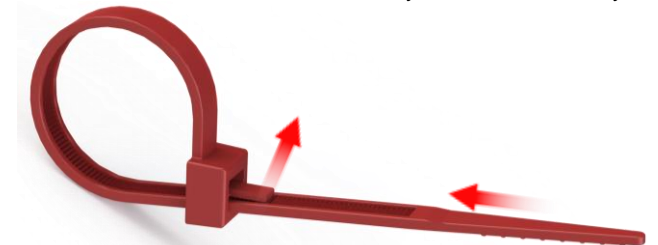
Loosen the nut by min of 6 rotations (or 6mm)	
and slide the Daughter Clamp between two stacked OneClamps	
Ensure that location lugs are properly seated in the correct position	
and re-tighten the nut	

Deploying cable ties

Insert cable tie into one of the clamp's slots and tighten around desired ancillary cable, accessory or fitting.



OneClamp cable ties are re-usable, depress lever on cable ties to loosen tie and release ancillary cable or accessory.



ONE CLAMP ACCESSORY PRODUCTS

- Fibre cassette 1 – for single outdoor fibres
- Fibre cassette 2 – for multicore outdoor fibres
- M10 studding kit
- M8 studding kit
- CTL clamps
- M8 clamp conversion kit
- Engineered polymer inserts*:
 - DM1 (for cable diameters 13-29mm)
 - DM2 (for cable diameters 10-25mm)
 - DM3 (for cable diameters 6-16 mm)

*Other sizes and designs available on request

For sales or technical support please contact us below:



Hughes Electronics Ltd
 Unit G, Southwark Business Centre
 Ayres Street, London, SE1 1ES, UK
 Tel: (+44) 0207 378 1400
 support@hugheselectronics.co.uk

www.hugheselectronics.co.uk